

Create your material in Inkscape, or open a PDF in another program. The rest is the same.

Use a standard or custom page size

Document Properties

Page Guides Grids Snap Color Scripting Metadata License

General

Display units: mm

Page Size

A4	210.0 x 297.0 mm
US Letter	8.5 x 11.0 in
US Legal	8.5 x 14.0 in
US Executive	7.2 x 10.5 in
US Ledger/Tabloid	11.0 x 17.0 in
A0	841.0 x 1189.0 mm
A1	594.0 x 841.0 mm
A2	420.0 x 594.0 mm
A3	297.0 x 420.0 mm
A5	148.0 x 210.0 mm
A6	105.0 x 148.0 mm
A7	74.0 x 105.0 mm
A8	52.0 x 74.0 mm
A9	37.0 x 52.0 mm
A10	26.0 x 37.0 mm
B0	1000.0 x 1414.0 mm
B1	707.0 x 1000.0 mm
B2	500.0 x 707.0 mm

Orientation: Portrait Landscape

Custom size

Width: 24.00000 Height: 24.00000 Units: in

Resize page to content...

Scale

Scale x: 1.00000 Scale y: 1.00000 User units per mm

Viewbox...

Background

Checkerboard background

Background color: [Color Picker]

Border

Show page border

Border on top of drawing

Show border shadow

Border color: [Color Picker]

Display

Use antialiasing

X: 14.547 Y: 313.797 W: 576.289 H: 271.263 mm

Example printing
two maps on one
24" X 24" page.



Document Properties

Page Guides Grids Snap Color Scripting Metadata License

General
Display units: mm

Page Size

A4	210.0 x 297.0 mm
US Letter	8.5 x 11.0 in
US Legal	8.5 x 14.0 in
US Executive	7.2 x 10.5 in
US Ledger/Tabloid	11.0 x 17.0 in
A0	841.0 x 1189.0 mm
A1	594.0 x 841.0 mm
A2	420.0 x 594.0 mm
A3	297.0 x 420.0 mm
A5	148.0 x 210.0 mm
A6	105.0 x 148.0 mm
A7	74.0 x 105.0 mm
A8	52.0 x 74.0 mm
A9	37.0 x 52.0 mm
A10	26.0 x 37.0 mm
B0	1000.0 x 1414.0 mm
B1	707.0 x 1000.0 mm
B2	500.0 x 707.0 mm

Orientation: Portrait Landscape

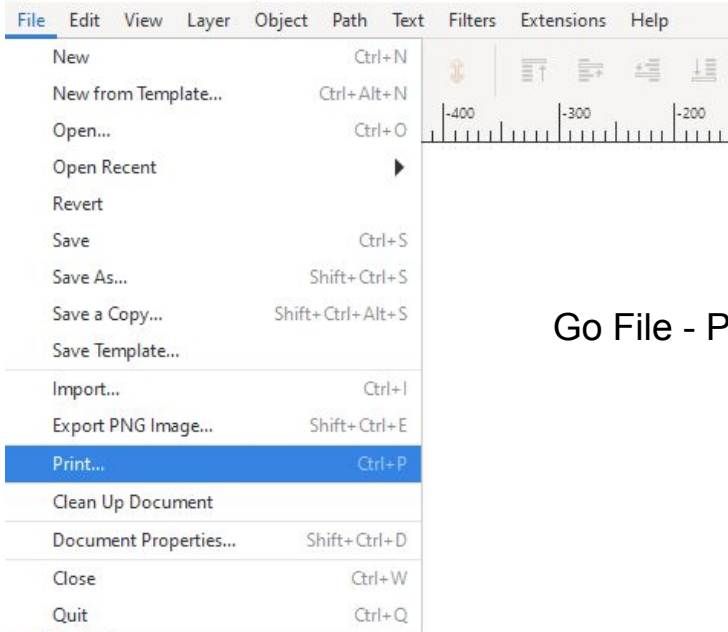
Custom size
Width: 24.00000 Height: 24.00000 Units: in

Scale
Scale x: 1.00000 Scale y: 1.00000 User units per mm.

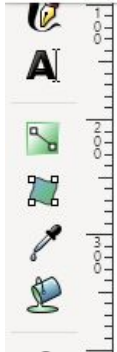
Background
 Checkerboard background
Background color: [color swatch]

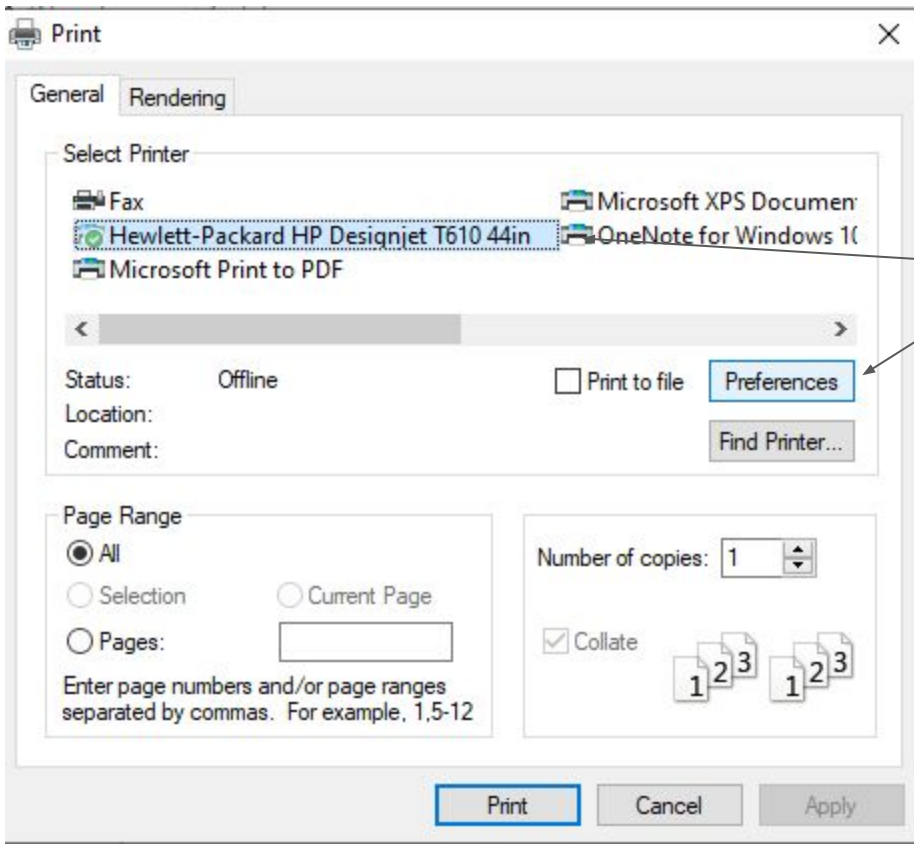
Border
 Show page border
 Border on top of drawing
 Show border shadow
Border color: [color swatch]

Display
 Use antialiasing



Go File - Print.





Select the Hewlett-Packard printer, then click "Preferences".

Advanced Printing Shortcuts Paper/Quality Features Color Services

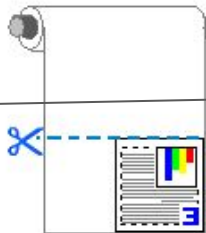
Paper Options:

Document size: **8.5 × 11 inches**

Letter

Margins/Layout...

Custom...



Click "Custom"

Printed on: 8.5 × 11 inches

Show preview before printing

Print Quality

Standard options

Speed Quality

Custom options

Settings...

Rendering resolution (ppi): 300

Printing resolution (dpi): Automatic

Orientation

Portrait

Landscape



[1/1] Status and Service unavailable. Device may be offline or unreachable at this time.



Help

OK

Cancel

Custom Paper Size



The custom paper size you have just defined will not become available for selection until you have exited and re-entered the Printing Preferences/Properties.

Name

24X24

Save

Paper Size

Width:

24

(3.00 - 44.25)

Length:

24

(5.51 - 3582.68)

Units

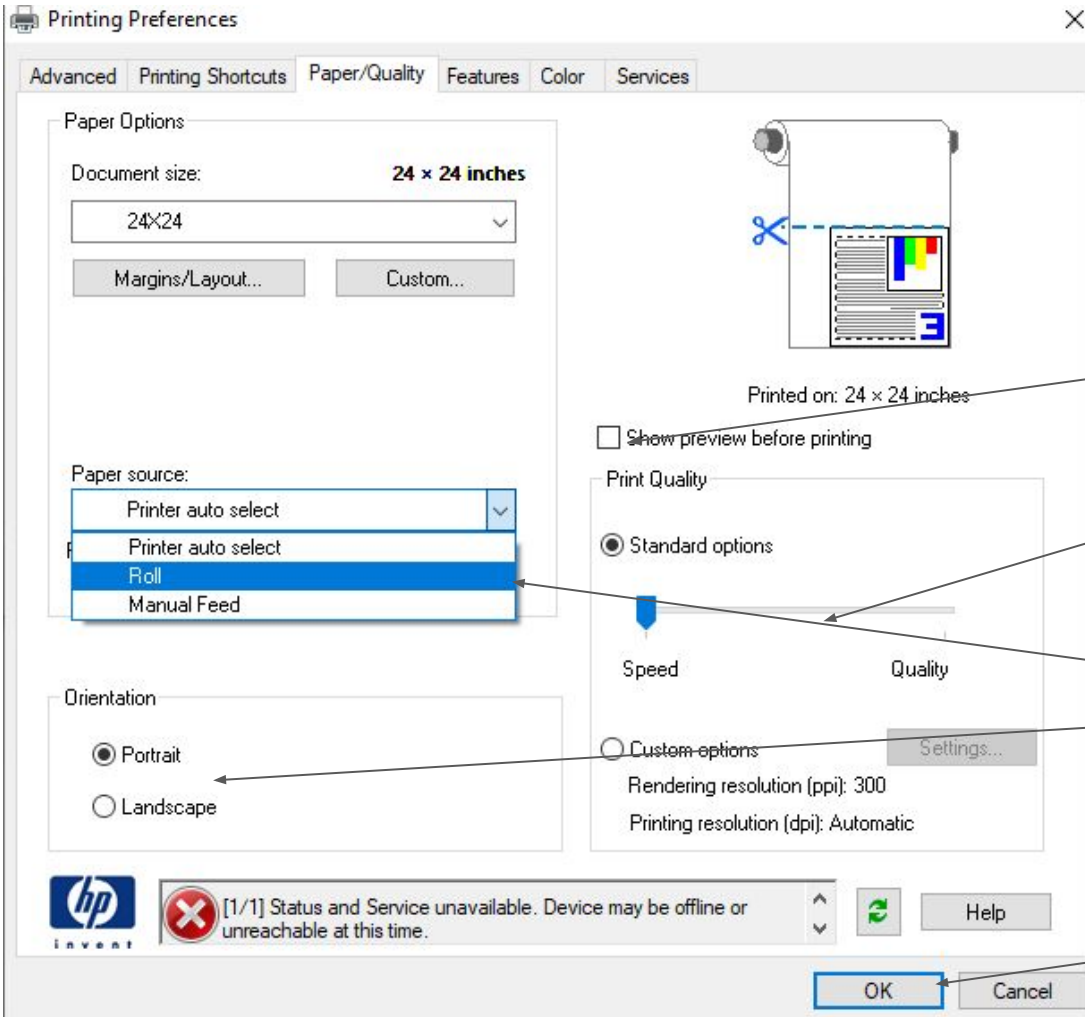
Inches

Millimeters

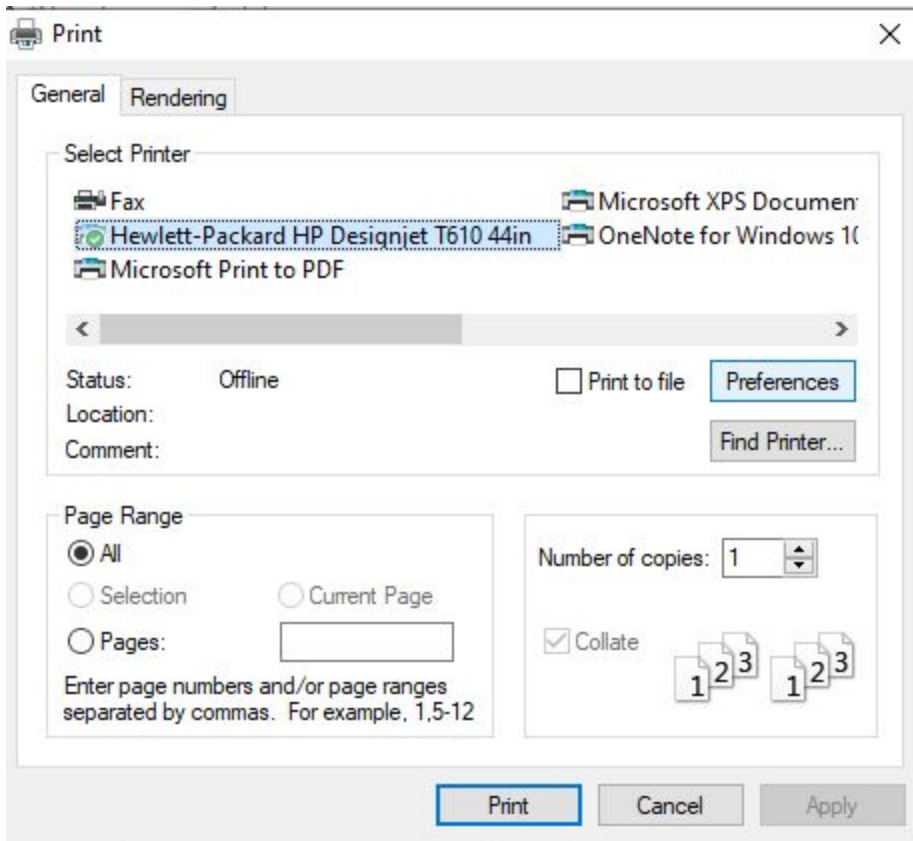
OK

Cancel

Enter the Width, Length and then give your paper size a name, then click "Save". Then click "OK" which will no longer be grey.



- Put a tick in the “Show preview before printing” box so you can verify it will print correctly.
- Set the Print Quality depending on your needs. There is a pretty big difference between the “Speed” and “Quality” settings.
- Change the paper source to “Roll”
- You can change the print orientation of your file if you need to.
- If you need to adjust settings on other tabs you can do so now.
- Click “OK”



Click “Print” and you should see a preview pop up in an HP application. This way you can check that it looks right before starting the print job. If you don’t the popup, check the icons on the taskbar because sometimes it doesn’t put itself front and center. If your preview looks correct, press Print on that screen. Otherwise go back to “Preferences” and make any necessary adjustments.