



Installation Guide

Thank you very much for purchasing this product.

- To ensure correct and safe usage with a full understanding of this product's performance, please be sure to read through this manual completely and store it in a safe location.
- Unauthorized copying or transferal, in whole or in part, of this manual is prohibited.
- The specifications of this product and the contents of this operation manual are subject to change without notice.
- The operation manual and the product have been prepared and tested as much as possible. If you find any misprints or errors, please inform us.
- Roland DG Corporation assumes no responsibility for any direct or indirect loss or damage that may occur through use of this product, regardless of any failure to perform on the part of this product.
- Roland DG Corporation assumes no responsibility for any direct or indirect loss or damage that may occur with respect to any article made using this product.

Copyrights and property of this software and this manual belong to Roland DG Corporation. No part of this software or publication may be reproduced, stored in a retrieval system, or transmitted, in any form or by any means, electronic, mechanical, photocopy, recording or otherwise, without the prior written permission of the publisher.

VersaWorks is a registered trademark of Roland DG Corporation.

Windows® is a registered trademark or trademark of Microsoft® Corporation in the United States and/or other countries.

Pentium® is a registered trademark of Intel Corporation in the United States.

Macintosh is a registered trademark of Apple Inc in the United States.

PANTONE® Colors displayed in the software application or in the user documentation may not match PANTONE-identified standards. Consult current PANTONE Color Publications for accurate color. PANTONE® and other Pantone trademarks are the property of Pantone LLC. ©Pantone LLC, 2016.

Pantone is the copyright owner of color data and/or software licensed to Roland DG Corporation to distribute for use only in combination with VersaWorks. PANTONE color data and/or software shall not be copied onto another disk or into memory unless as part of the environment for the execution of VersaWorks.

Other company names and product names are trademarks or registered trademarks of their respective holders.



Contents

Contents.....	1
Introduction.....	2
What Is VersaWorks?.....	2
About the User's Manuals.....	3
1. Installation and Settings.....	5
Installing VersaWorks.....	6
System Requirements.....	6
Installation.....	6
Before Connecting the Printer.....	12
Connecting the Printer.....	15
LAN Connection.....	15
USB Connection.....	17
LAN Connection (GR-640/540/420).....	19
Connecting Multiple Printers.....	21
Making the Settings for Roland@NET.....	22
What Is Roland@NET?.....	22
Making the Settings for Roland@NET.....	22
Setting Up the Client.....	24
Windows Client.....	24
Macintosh Client.....	27
2. Basic Operations.....	31
Starting VersaWorks.....	32
Starting Method.....	32
Deleting VersaWorks.....	33
Deleting VersaWorks.....	33

Introduction

What Is VersaWorks?

VersaWorks is an advanced software RIP that provides the user with the following advantages.

- It has an easy-to-use user interface that consists of simple operations.
- It has a cutting function and also supports printing and cutting machines. It enables a wide variety of applications that combine printing and cutting.
- It supports the printing of spot colors. It converts the colors registered in spot color libraries into process colors for printing. In addition to the spot color library that is registered as standard, new libraries can also be created.
- It is standard-equipped with various output functions designed to improve productivity (such as tiled output and an automatic nesting function).
- It can use Roland@NET to automatically update the software.
- You can connect up to four printers to a single computer.
- It can be used to add cutting lines to printing data (Job Assistant function).

About the User's Manuals

The following user's manuals are included with the software.

- **Installation guide (this manual: electronic-format manual)**

This manual explains how to install VersaWorks.

- **VersaWorks help (electronic-format manual)**

The operation method of VersaWorks is written in this manual.

Viewing the Help from the Website

You can view and download the electronic-format manual from the following URL or QR code.

<https://downloadcenter.rolanddg.com/VersaWorks6>

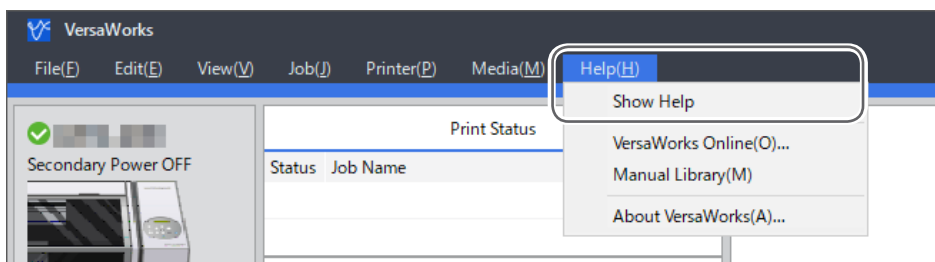
* You can also view and download the paper manuals.

* You can also view this website from a smartphone.



Viewing the Help from the Software

Click the [Help] menu, and then click [Show Help].




Viewing the Help from the Windows Menu

Windows 10

From the list of apps (programs) on the [Start] menu, click [VersaWorks] - [VersaWorks Help].

Windows 8.1

On the [Start] screen, click . On the [Apps] screen, click [VersaWorks] - [VersaWorks Help].

1. Installation and Settings

Installing VersaWorks

System Requirements

Operating system (OS)	Windows 10, 8.1 (32-bit edition/64-bit edition)*1, *2
Processor	2.0 GHz or faster Intel Core 2 Duo recommended
Memory	2 GB or more recommended
Video card and monitor	A resolution of 1,280 x 1,024 or more
Free hard-disk space required for work	40 GB or more recommended
Hard disk file system	NTFS format
Optical drive	DVD-ROM drive
Other requirements	<ul style="list-style-type: none">• Ethernet port*3• USB port*3• To use Roland@NET: Internet connection and web browser

- *1 The 32-bit application can be installed on the 32-bit edition of Windows. The 64-bit application can be installed on the 64-bit edition of Windows. The application cannot be installed if the number of bits differ between Windows and the application.
- *2 The Job Assistant function is only enabled on the 64-bit edition of Windows.
- *3 A port that matches the interface of the model you are using is required.

Installation

1. Download the software.

1 Log on to Windows with an account with "Administrators" rights.

Shut down all other programs.

MEMO

Only the account with "Administrators" rights that was used to install this software can use it.

2 In an arbitrary location, create a folder in which to download the software.

3 Access the download website (<https://downloadcenter.rolanddg.com/VersaWorks6>).

4 Download all the files in the software field to the folder created in step 2.

Check that the following files have been saved.

- VW_Installer.part1.exe
- VW_Installer.part2.rar
- VW_Installer.part3.rar

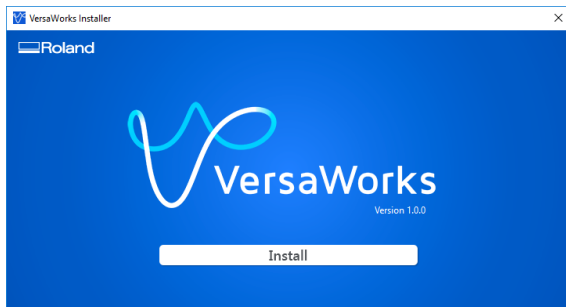
5 Double-click [VW_Installer.part1.exe].

The folder "VW_Installer" is created, and then all the files required for the installation are extracted.

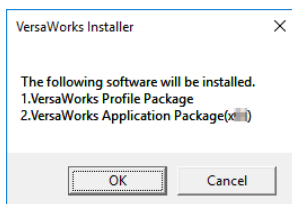
2. Start the installation.

1 Click [Install].

When the [User Account Control] window appears, click [Yes] (or [Allow]).

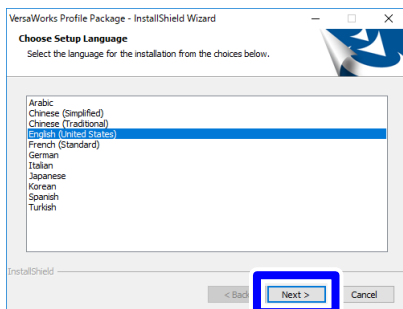


2 Click [OK].

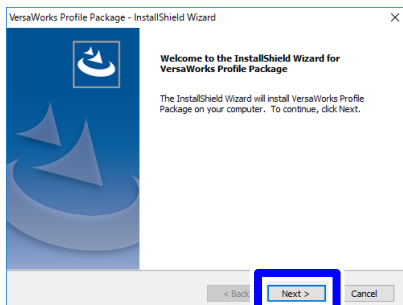


3. Install VersaWorks Profile Package.

1 Select the language you will use in the installation procedure, and then click [Next].



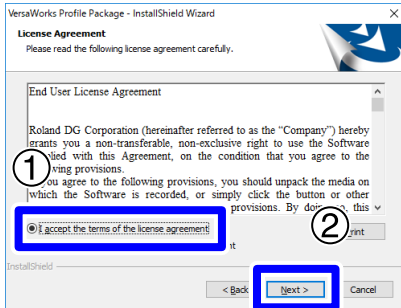
2 Click [Next].



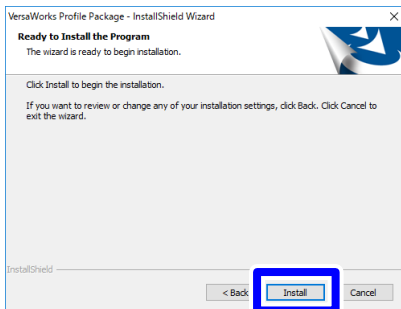
3 Check the license agreement.

① Select [I accept the terms of the license agreement].

② Click [Next].

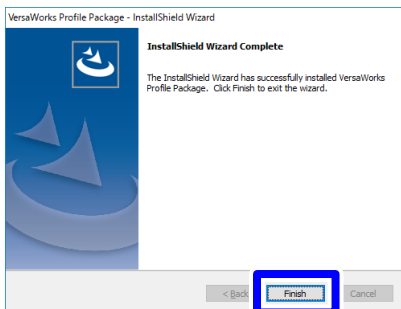


4 Click [Install].



The installation starts. Wait until the operation finishes.

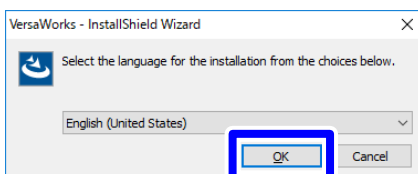
5 When the following window is displayed, click [Finish].



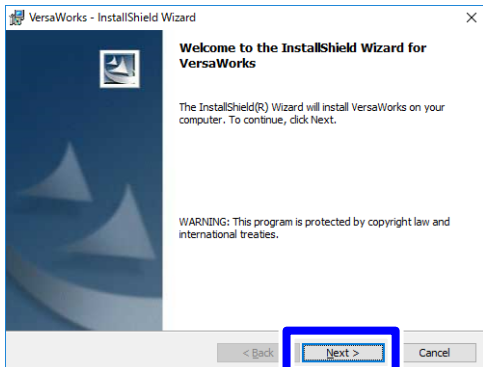
Continue with the VersaWorks installation. Wait until the operation finishes.

4. Install VersaWorks.

① Select the language you will use in the installation procedure, and then click [OK].



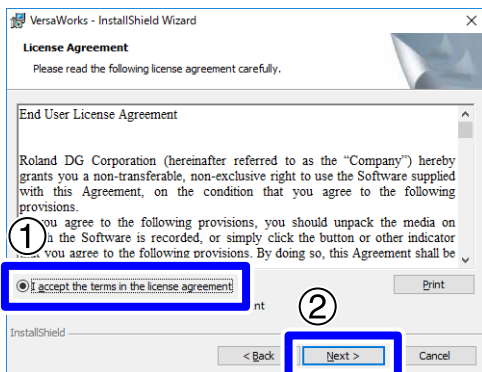
2 Click [Next].



3 Check the license agreement.

① Select [I accept the terms in the license agreement].

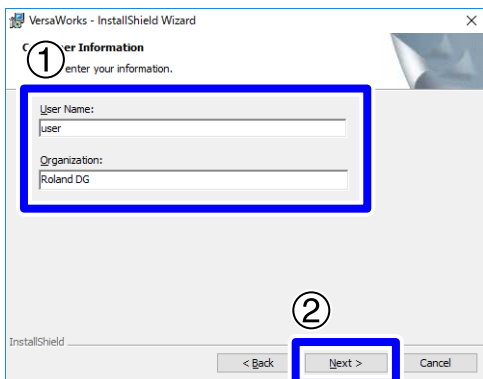
② Click [Next].



4 Enter the user information.

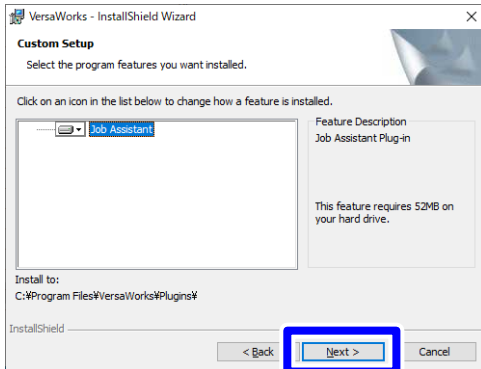
① Enter the "User Name" and "Organization."

② Click [Next].



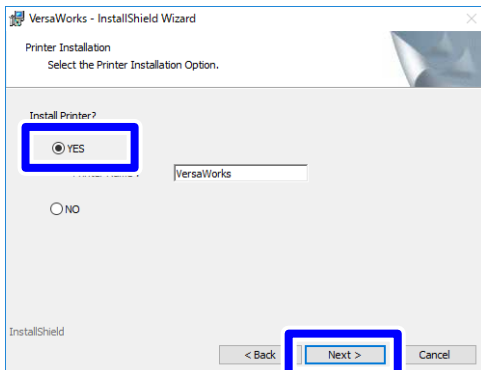
5 Click [Next].

This window is only displayed on 64-bit operating systems. If you are using a 32-bit operating system, proceed to step 6.



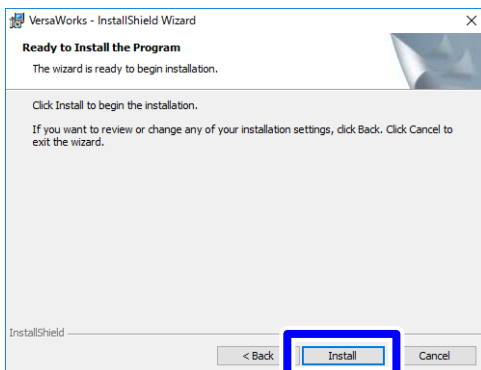
Follow the messages to carry out setup and finish setting up the program.

6 When the following window is displayed, select [YES], and then click [Next].

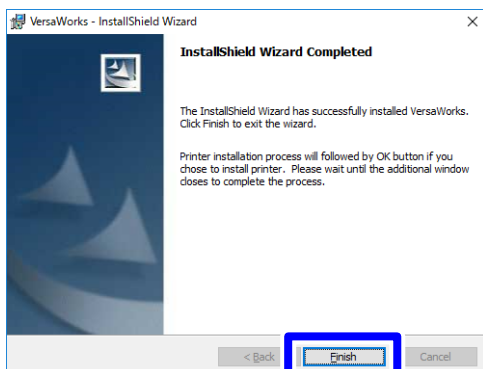


7 Click [Install].

The software installation starts. Wait until the operation finishes.

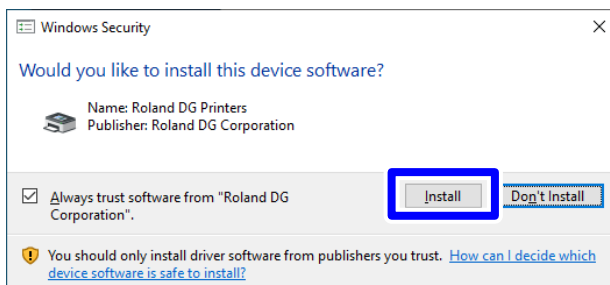


8 When the following window is displayed, click [Finish].

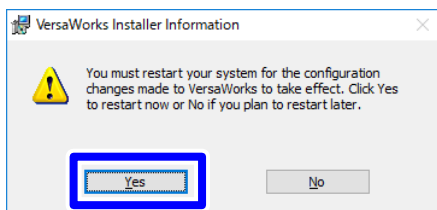


Installation of the printer driver starts. Wait until the operation finishes.

9 When the following window is displayed, click [Install].



10 If you're prompted to restart, click [Yes] and restart the computer.



Restarting the computer completes the installation.

IMPORTANT: To users printing from Macintosh clients

Do not delete the folder [VW_Installer] - [For Macintosh] that was created during the installation. The software uses the files in this folder.

☞ P. 27 "Macintosh Client"

Before Connecting the Printer

Check to make sure that you're using the latest version of VersaWorks. If VersaWorks is not the latest version, it may not be possible to print from the connected printer.

- To perform this operation, connect the computer on which VersaWorks is installed to the Internet.
- If upgrading cannot be accomplished by following the steps described below, contact your authorized Roland DG Corporation dealer.


Procedure

1 Display the window for updating the software.

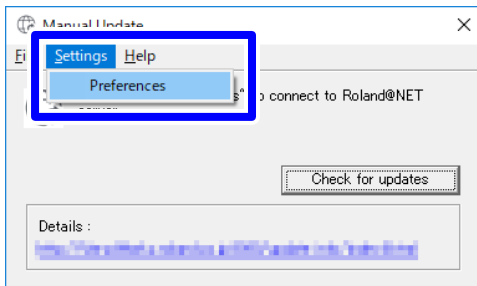
Windows 10

From the list of apps (programs) on the [Start] menu, click [VersaWorks] - [Online Update].
When the [User Account Control] window appears, click [Yes] (or [Allow]).

Windows 8.1

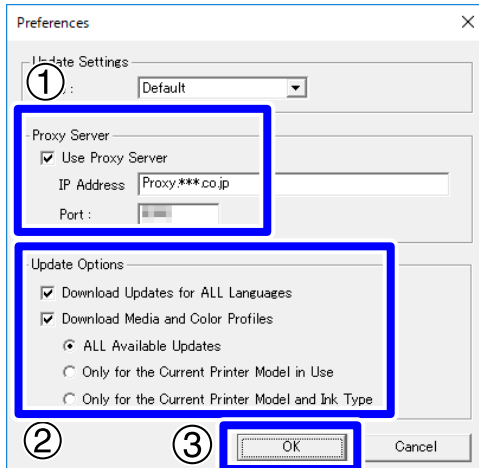
On the [Start] screen, click . On the [Apps] screen, click [VersaWorks] - [Online Update].

2 On the [Settings] menu, click [Preferences].

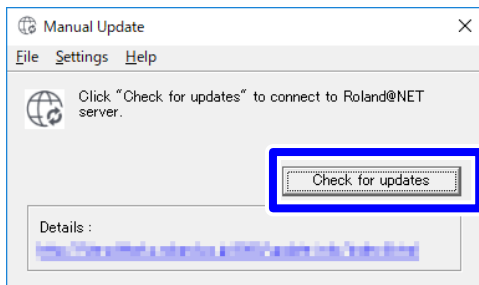


3 Set the details for "Preferences."

- ① To use a proxy server, select the check box and type in the IP address and port number.
- ② Select the two check boxes, and then select [ALL Available Updates].
- ③ Click [OK].



4 Click [Check for updates].

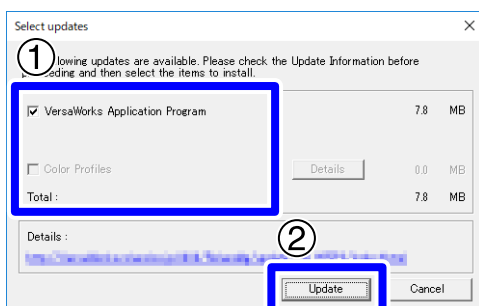


5 Perform the operations shown below that correspond to the displayed window.

If the [Select updates] window is displayed
Update data is available.

- ① Select all the check boxes that can be selected.
- ② Click [Update].

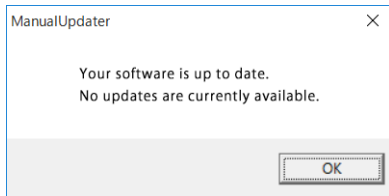
The update data is downloaded.



If the following window is displayed

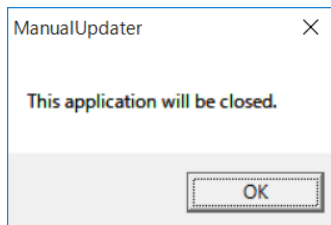
You're using the latest version of VersaWorks. Click [OK].

No further operations are required. Proceed to P. 15 "Connecting the Printer".

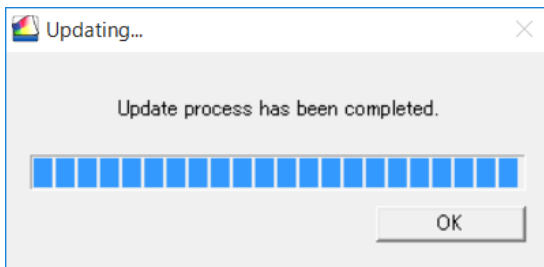


6 Click [OK].

When the [User Account Control] window appears, click [Yes] (or [Allow]).



7 Click [OK].



This completes the update of VersaWorks to the latest version.

Connecting the Printer

You can connect up to four printers to a single computer.

The connection method differs according to the printer model. Connect the devices according to the type of the connection port on the printer you're using.

LAN Connection

This section explains how to use an Ethernet cable to connect the printer.

IMPORTANT: The connection method is different on the GR-640/540/420.

On the GR-640/540/420, the procedure is different from that shown below. For more information, see P. 19 "LAN Connection (GR-640/540/420)".

Procedure

- 1 On the printer, set the IP address and perform the other preparations required for connecting over Ethernet.**


For information on how to set the IP address, refer to the instruction manual of the printer you're using.

- 2 Make sure the power to the printer is switched on.**
- 3 Connect the printer and the computer (RIP server) to the same LAN.**
- 4 Start VersaWorks.**

Windows 10

- 1 Click the [Start] menu.**
- 2 From the list of apps (programs), click [VersaWorks] - [VersaWorks].**

Windows 8.1

- 1 Click  on the [Start] screen.**
- 2 On the [Apps] screen, click [VersaWorks] - [VersaWorks].**

The [Printer Settings] window appears. It appears only when the software starts for the first time.

5 Set the printer to connect.

① **Select [TCP/IP], and then enter the IP address that has been assigned to the printer.**

② **Click [Verify].**

If the connection is established correctly, the "Model Name," "Ink Type," and other information about the printer you're using is displayed.

③ **Set the [Nick Name].**

If you do not set a nickname, the model name is displayed.

④ **Click [Apply].**

⑤ **When the message "Do you want to install the printer driver?" is displayed, click [Yes].**

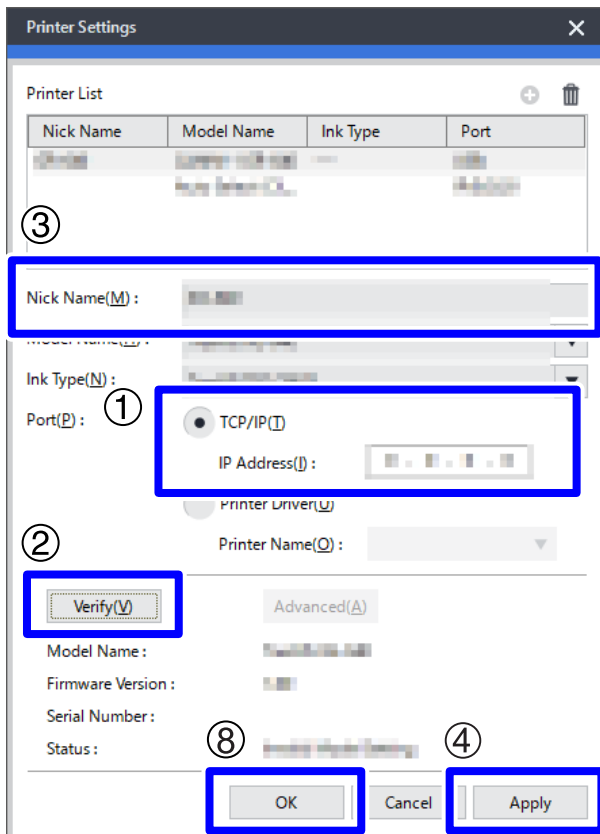
This message does not indicate the printer driver to use in communication.

⑥ **When the [User Account Control] window appears, click [Yes] (or [Allow]).**

⑦ **When the [Add Printer Wizard] window appears, click [Next].**

The information of the connected printer appears in the [Printer List].

⑧ **Click [OK].**



This completes the preparations for performing output using VersaWorks.

To continue by connecting one or more additional printers, go on to P. 21 "Connecting Multiple Printers".

USB Connection

This is for a printer connected using a USB cable.

Please note that a USB connection requires a separate Windows-based driver, which is included with the printer.

Procedure

- 1 Install the Windows-based driver for the printer you're using, and then connect the printer and the computer using a USB cable.**

For information on how to install the Windows-based driver, refer to the instruction manual for the printer you're using.


- 2 Make sure the power to the printer is switched on.**

- 3 Start VersaWorks.**

Windows 10

- 1 Click the [Start] menu.**
- 2 From the list of apps (programs), click [VersaWorks] - [VersaWorks].**

Windows 8.1

- 1 Click  on the [Start] screen.**
- 2 On the [Apps] screen, click [VersaWorks] - [VersaWorks].**

The [Printer Settings] window appears. It appears only when the software starts for the first time.

4 Set the printer to connect.

① **Select [Printer Driver], and then select the [Printer Name].**

② **Click [Verify].**

If the connection is established correctly, the "Model Name," "Ink Type," and other information about the printer you're using is displayed.

③ **Set the [Nick Name].**

If you do not set a nickname, the model name is displayed.

④ **Click [Apply].**

⑤ **When the message "Do you want to install the printer driver?" is displayed, click [Yes].**

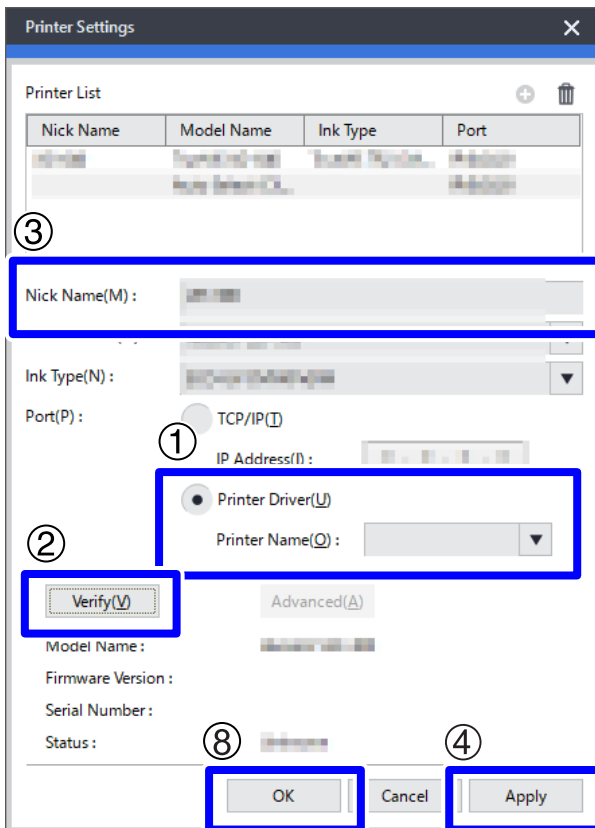
This message does not indicate the printer driver to use in communication.

⑥ **When the [User Account Control] window appears, click [Yes] (or [Allow]).**

⑦ **When the [Add Printer Wizard] window appears, click [Next].**

The information of the connected printer appears in the [Printer List].

⑧ **Click [OK].**



This completes the preparations for performing output using VersaWorks.

To continue by connecting one or more additional printers, go on to P. 21 "Connecting Multiple Printers".

LAN Connection (GR-640/540/420)

The connection method is different on the GR-640/540/420. Follow the procedure shown below to connect to the printer.

Procedure

- 1 On the GR-640/540/420, set the IP address and perform the other preparations required for connecting over Ethernet.


For information on how to set the IP address, refer to the instruction manual of the GR-640/540/420.

- 2 Check that the GR-640/540/420 is turned on.
- 3 Connect the GR-640/540/420 and the computer (RIP server) to the same LAN.
- 4 Start VersaWorks.

Windows 10

- 1 Click the [Start] menu.
- 2 From the list of apps (programs), click [VersaWorks] - [VersaWorks].

Windows 8.1

- 1 Click  on the [Start] screen.
- 2 On the [Apps] screen, click [VersaWorks] - [VersaWorks].

The [Printer Settings] window appears. It appears only when the software starts for the first time.

5 Set the device to connect.

① **Select [Printer Driver], and then select the [Printer Name].**

② **Click [Verify].**

If the connection is established correctly, the "Model Name," "Status," and other information about the device you're using is displayed.

③ **Set the [Nick Name].**

If you do not set a nickname, the model name is displayed.

④ **Click [Apply].**

⑤ **When the message "Do you want to install the printer driver?" is displayed, click [Yes].**

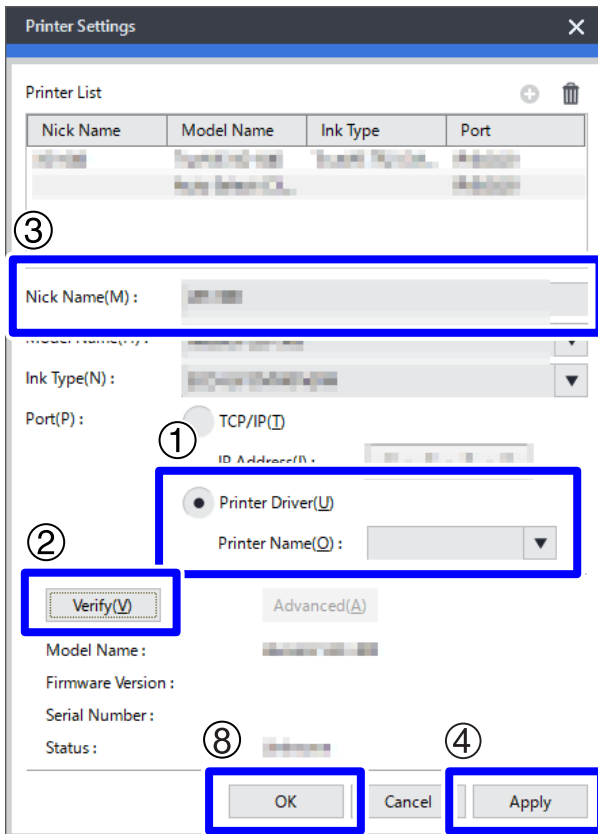
This message does not indicate the printer driver to use in communication.

⑥ **When the [User Account Control] window appears, click [Yes] (or [Allow]).**

⑦ **When the [Add Printer Wizard] window appears, click [Next].**

The information of the connected device appears in the [Printer List].

⑧ **Click [OK].**



This completes the preparations for performing output using VersaWorks.

To continue by connecting one or more additional devices, go on to P. 21 "Connecting Multiple Printers".

Connecting Multiple Printers

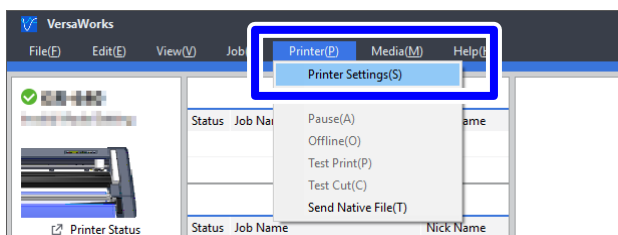
You can connect up to four (*) printers.

This section assumes that the first printer has already been connected and explains how to connect the second and later printers.

* The number of printers that you can connect differs depending on the model. Contact your authorized Roland DG Corporation dealer.

Procedure

- 1 Check that the second printer is turned on, and then connect this printer to the computer.
- 2 From the menu bar, click [Printer] - [Printer Settings].



The [Printer Settings] window appears.

- 3 Set the printer to connect.

- 1 Click **+**.

- 2 Set the printer to connect.

The way to set the printer differs depending on the printer model and on the type of the connection port.

☞ P. 15 "LAN Connection" **5**

☞ P. 17 "USB Connection" **4**

☞ P. 19 "LAN Connection (GR-640/540/420)" **5**

- 4 To add more printers, repeat steps **1**, **2**, and **3**.

- 5 When you're done making all the settings, click [OK].

This completes the preparations for performing output using VersaWorks.

Making the Settings for Roland@NET

What Is Roland@NET?

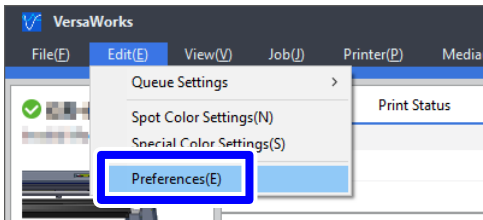
Roland@NET is a service that lets you obtain the software update information over the Internet. When VersaWorks is set to connect to Roland@NET, you are automatically notified when software updates become available. You can also download update data.

Making the Settings for Roland@NET

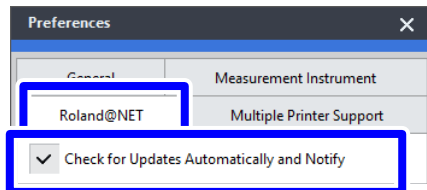
Procedure

- 1 From the menu bar, click [Edit] - [Preferences].

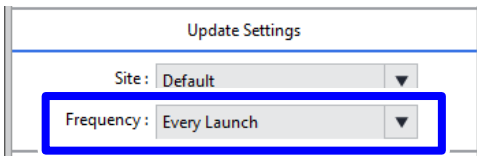
The [Preferences] window appears.



- 2 Click the [Roland@NET] tab.
- 3 Select the [Check for Updates Automatically and Notify] check box.

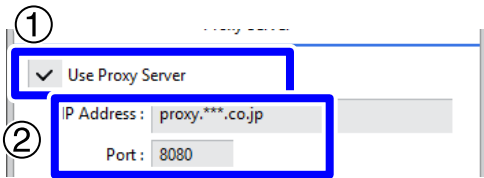


- 4 In the "Update Settings" field, select the "Frequency."



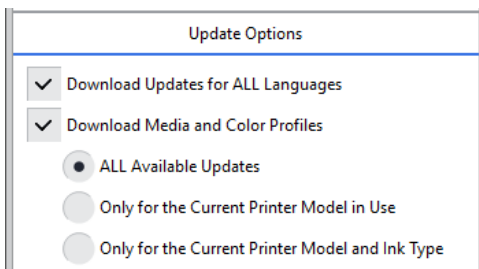
5 To use a proxy server, make the settings for the proxy server.

- ① Select the "Use Proxy Server" check box.
- ② Enter the [IP Address] and the [Port] number.

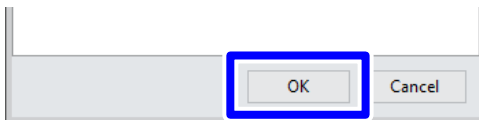


6 Select the options under "Update Options."

Select what to download.



7 When you're done making all the settings, click [OK].



You are now done making the settings for Roland@NET.

Setting Up the Client

Computers used to create image files are called client computers. In contrast to this, the computer on which VersaWorks is installed and set up is called the raster image processor (RIP) server. Connecting the client to the RIP server over a network lets you send printing data from the client to the RIP server. In other words, you can use the RIP server as a printer for the client. You can also combine the RIP server and client on a single computer. When the client and the RIP server are different computers, you need to install a printer driver on the client. Follow the steps below to install the printer driver.

Windows Client

Procedure


1 Make sure the RIP server is running, and then log on to an account with "Administrators" rights.

2 Display the [Devices and Printers] window.

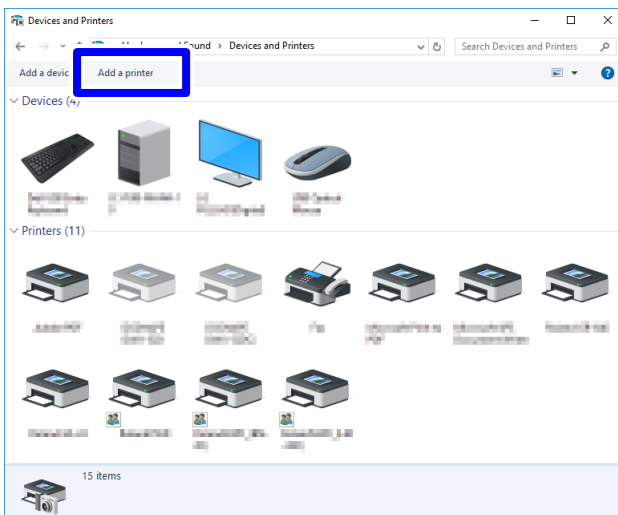
Windows 10

- 1 Right-click the [Start] menu.
- 2 Click [Control Panel].
- 3 Click [View devices and printers].

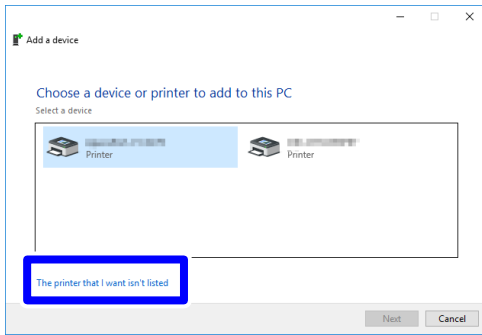
Windows 8.1

- 1 Click  on the [Start] screen.
- 2 On the [Apps] screen, click [Control Panel] - [Devices and Printers].

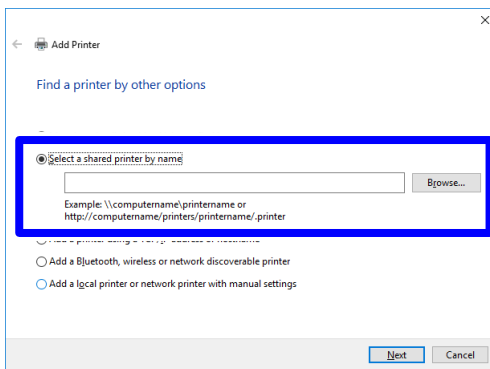
3 Click [Add a printer].



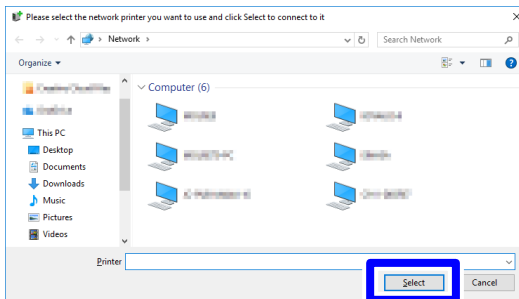
4 Click [The printer that I want isn't listed].



5 Select [Select a shared printer by name], and then click [Browse].

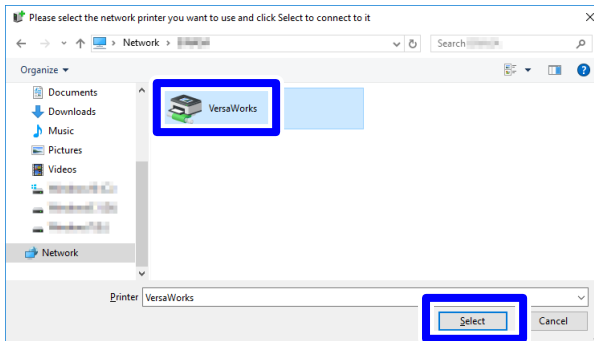


6 Select the RIP server computer, and then click [Select].

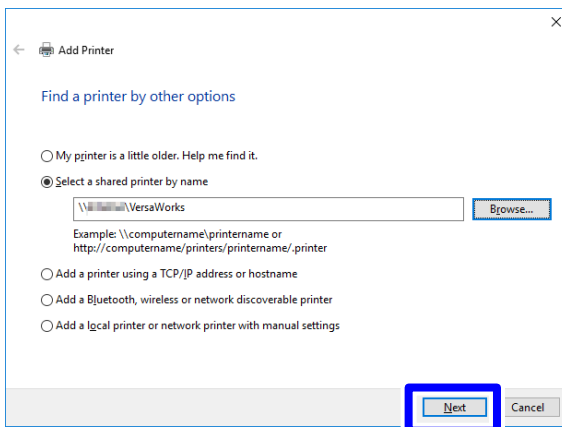


If you are prompted to enter a user name and password, enter the user name and password for the RIP server computer.

7 Select "VersaWorks" (or the nickname that has been set), and then click [Select].



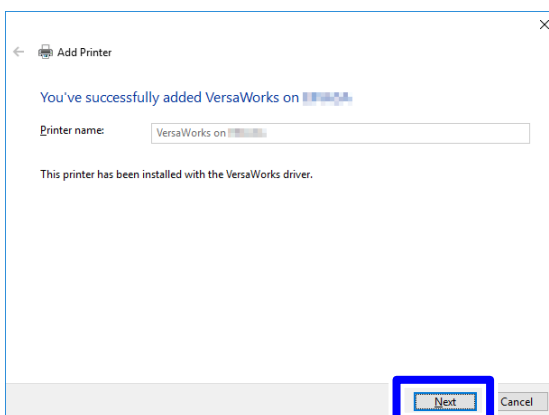
8 Click [Next].



When the window confirming that you trust the printer appears, click [Install driver].

When the [User Account Control] window appears, click [Yes] (or [Allow]).

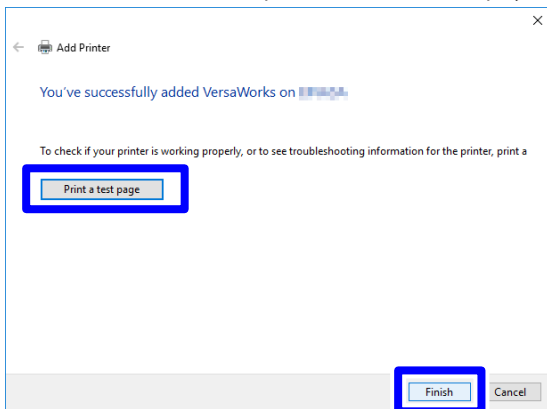
If the following window appears, the printer is added. Click [Next].



9 Click [Finish].

If you want to perform a printing test, click [Print a test page].

* If the [Set as the default printer] check box is displayed, clear this check box according to your situation.



This completes the settings for the client. You can print from the program in the same way as with other printers.

Macintosh Client

Check This First

Before making the settings, check the following.

- The client is a Mac OS X (10.5 or later) machine.
- The user is logging on to the RIP server with an account that has administrator rights.
- The printer and the computers (RIP server and client) are connected correctly and are all switched on.
- The printer settings are properly configured on the RIP server.
- The printer is ready to print.

Setup Method

If you register the RIP server as a network printer on the client, you can send data to the RIP server for it to print.

- * The screens shown in this explanation are for Mac OS 10.5. For Mac OS 10.6 or later, the appearance of the screens is slightly different, but the setting method is the same.

Procedure

1 Open the folder "VW_Installer" that was created during the installation.

2 Copy the PPD file to the computer.

① Double-click the [VersaWorks] icon on the desktop.

Mac OS X 10.13 or later

Double-click the [For Macintosh] - [PPD File] - [OS10.13 or later] - [English] folder.

Mac OS X 10.9 to 10.12

Double-click the [For Macintosh] - [PPD File] - [OS10.9-10.12] - [English] folder.

Mac OS X from 10.8 or earlier

Double-click the [For Macintosh] - [PPD File] - [OS10.8 or earlier] - [English] folder.

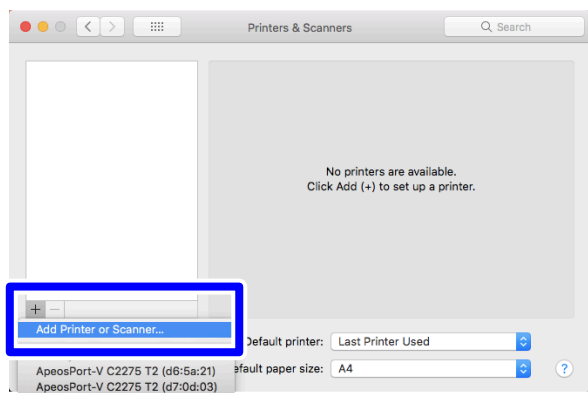
② Copy the "VERSAW.PPD" file to the desired location.

3 Double-click the [System Preferences] - [Printers & Scanners] folder.

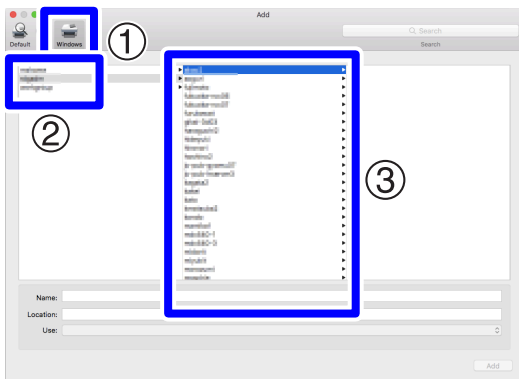


The [Printers & Scanners] window appears.

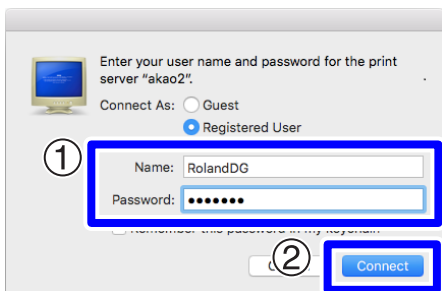
4 Click [+], and then click [Add Printer or Scanner].



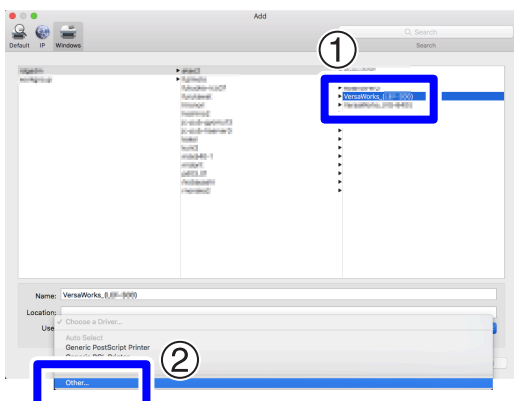
- 5 Select the RIP server to connect.
 - 1 Select [Windows].
 - 2 Select the network group to which the computer belongs.
 - 3 Select the name of the RIP server's computer from the list.



- 6 Enter the username and password.
 - 1 Enter the username and password for the RIP server.
 - 2 Click [Connect].



- 7 Select VersaWorks as the printer to output to.
 - 1 Select "VersaWorks" (or the nickname that has been set) from the list.
 - 2 Select [Other] in the [Use] list.

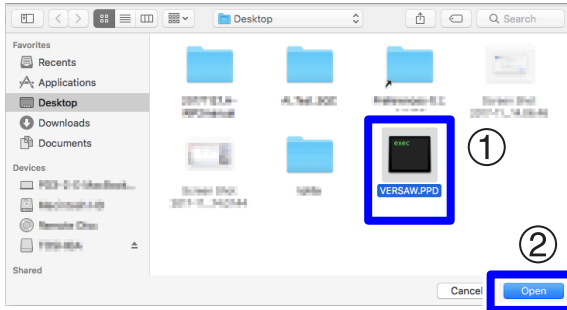


Setting Up the Client

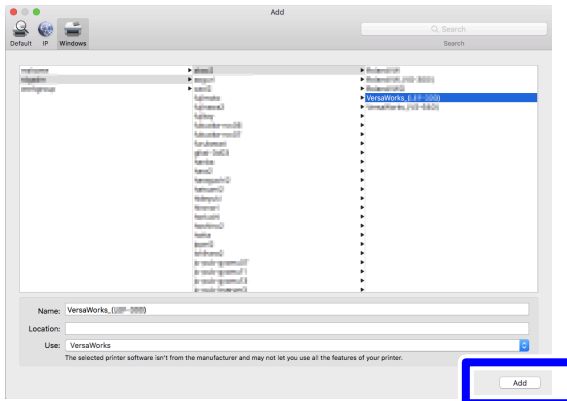
8 Open the PPD file.

① Select the file "VERSAW.PPD" file that you copied in step ②.

② Click [Open].



9 Click [Add].



This completes the settings for the client. You can perform output from the program in the same way as with other printers.

2. Basic Operations

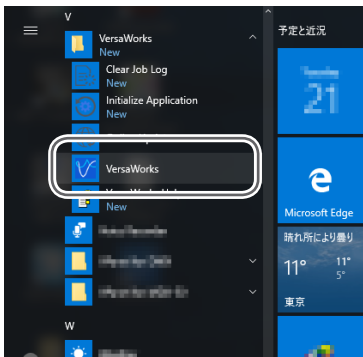
Starting VersaWorks

Starting Method


Procedure

Windows 10

- 1 Click the [Start] menu.
The list of apps (programs) is displayed.
- 2 Click [VersaWorks] - [VersaWorks].



Windows 8.1

- 1 Click  on the [Start] screen.
- 2 On the [Apps] screen, click [VersaWorks] - [VersaWorks].

You can view and download the electronic-format manual from the following URL or QR code.

<https://downloadcenter.rolanddg.com/VersaWorks6>

- * You can also view and download the paper manuals.
- * You can also view this website from a smartphone.



Deleting VersaWorks

Deleting VersaWorks

IMPORTANT: Perform operations according to the procedure shown below.


Delete all the target programs by following the procedure exactly. If you do not delete all the programs as shown in the procedure, it will not be possible to fully delete some programs, and the reinstallation of these programs will fail.

1. Delete "VersaWorks."

- 1 Log on to Windows with the account with "Administrators" rights that was used to install the software.


MEMO

Only the account with "Administrators" rights that was used to install this software can uninstall it.

- 2 Shut down all programs that are running.
- 3 Display the window for uninstalling programs.
 - Windows 10
 - 1 From the [Start] menu, click [Windows System] - [Control Panel].
 - 2 Click [Uninstall a program].
 - Windows 8.1
 - 1 Click  on the [Start] screen.
 - 2 On the [Apps] screen, click [Control Panel] - [Uninstall a program] (or [Programs and Features]).
- 4 Select "VersaWorks," and then click [Uninstall].
- 5 When the message "Are you sure you want to uninstall VersaWorks?" is displayed, click [Yes].

When the [User Account Control] window appears, click [Yes] (or [Allow]).
- 6 If you're prompted to restart, click [Yes] and restart the computer.

2. Delete "VersaWorks Profile Package."

- 1 After the computer restarts, log on with an account with "Administrators" rights.
- 2 Shut down all programs that are running.
- 3 Display the window for uninstalling programs.
 - Windows 10
 - 1 From the [Start] menu, click [Windows System] - [Control Panel].
 - 2 Click [Uninstall a program].
 - Windows 8.1
 - 1 Click  on the [Start] screen.
 - 2 On the [Apps] screen, click [Control Panel] - [Uninstall a program] (or [Programs and Features]).
- 4 Select "VersaWorks Profile Package," and then click [Uninstall].
- 5 When the message "Do you want to completely remove the selected application and all of its features?" is displayed, click [Yes].

When the [User Account Control] window appears, click [Yes] (or [Allow]).
- 6 When a window notifying you that the uninstallation is complete is displayed, click [Finish].
- 7 Check that the two folders shown below have been deleted.
 - The "VersaWorks" folder in the "Program Files" folder on the "C drive."
 - The "VersaWorks" folder in the "Roland DG VersaWorks" folder in the "ProgramData" folder on the "C drive."

* The "C drive" is the local drive (also known as the local disk) on the computer on which VersaWorks was installed. In most cases, this is the "C drive" or the "D drive."
- 8 If the folders listed above have not been deleted, follow the procedure shown below to delete them.

It is not acceptable for even one of these folders to remain. Delete both of them.

 - 1 Right-click the "VersaWorks" folder, and then select [Delete].
 - 2 When the message "Are you sure you want to move this folder to the Recycle Bin?" is displayed, click [Yes].

When the [User Account Control] window appears, click [Yes] (or [Allow]).


3. Delete the VersaWorks driver.

1 Display the installed printers.

Windows 10

- 1 From the [Start] menu, click [Windows System] - [Control Panel].
- 2 Click [View devices and printers].

Windows 8.1

- 1 Click  on the [Start] screen.
- 2 On the [Apps] screen, click [Control Panel] - [Devices and Printers].

2 Right-click "VersaWorks," and then click [Remove device].

3 If you're prompted to confirm deletion, click [Yes].

* If multiple printers are connected, repeat steps 2 and 3 to delete the printers.

4 With other printers (devices) that exist in the list selected, click [Print server properties].

When the [User Account Control] window appears, click [Yes] (or [Allow]).

5 Click the [Driver] tab.

If the [Change Driver Settings] button appears, click it.

6 Select "VersaWorks," and then click [Remove].

7 Select [Remove driver and driver package], and then click [OK].

8 If you're prompted to confirm deletion, click [Yes].

9 When the driver package information has been collected, click [Remove].

10 When the driver package has been deleted, click [OK].

This completes the procedure to delete VersaWorks.