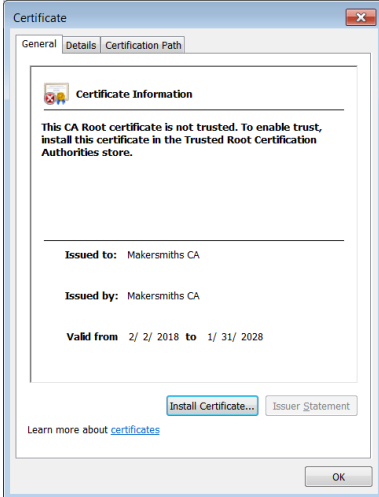


WiFi

- 2G & 5G spectrum
- MS-Members-2G and MS-Members-5G WPA2 Enterprise Authentication
 - See install directions for Windows below. Tablets/Phones/MAC so far have just worked.
 - Only available to Full or Associate members
 - Username is your Wild Apricot email address
 - Password is the value you entered into your "WiFi Password" field within Wild Apricot in your personal profile settings.
- MS-IoT - Internet of things WiFi. MAC Filtered. Contact Tech-Rat on Slack for new devices
- MS-Guest - Guest zone. PSK will be changing daily and posted on a digital screen with in the space

Windows 7/10 WPA2 Instructions (Trusted CA Version - Preferred):

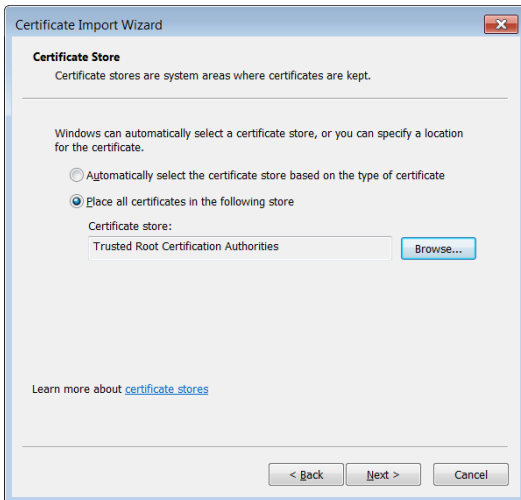
- Download the Makersmiths Certificate Authority: [makersmiths_ca.crt](#) (Download and Save)
- Double click the certificate file you just downloaded



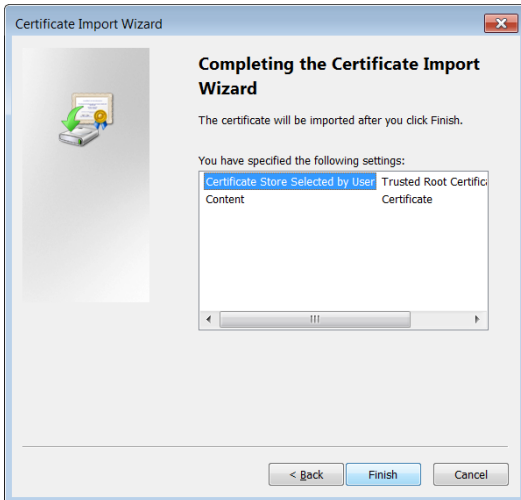
Click "Install Certificate"



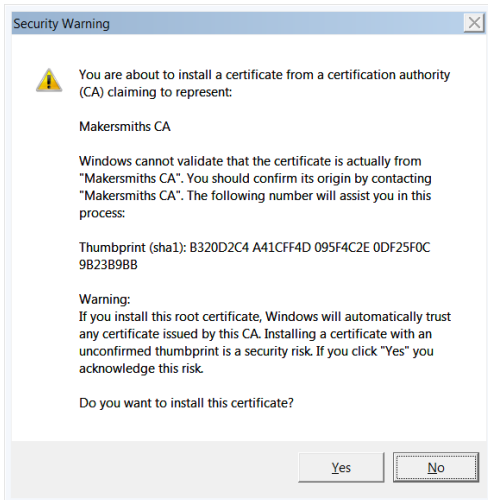
Click Next



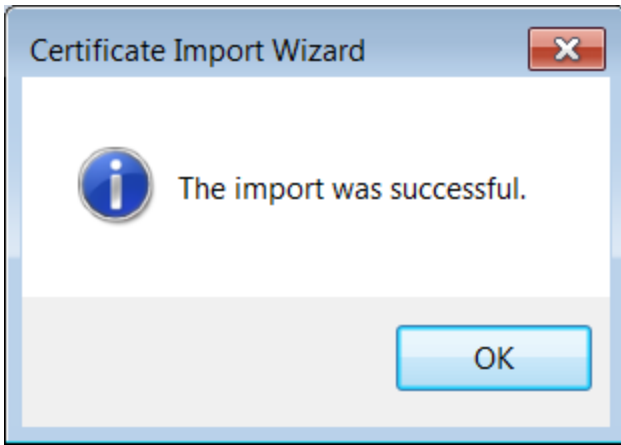
Place the new certificate in the "Trusted Root Certification Authorities" store



Click Finish



Verify the hash matches the one in the picture and click Yes

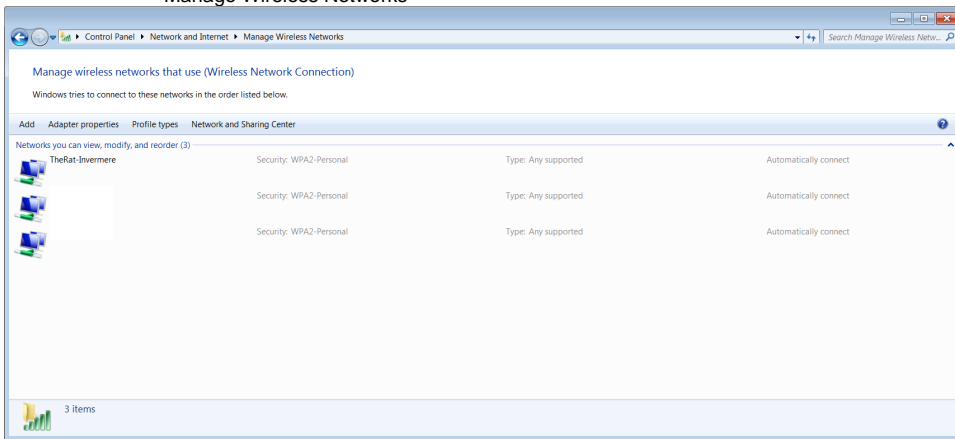


Click OK

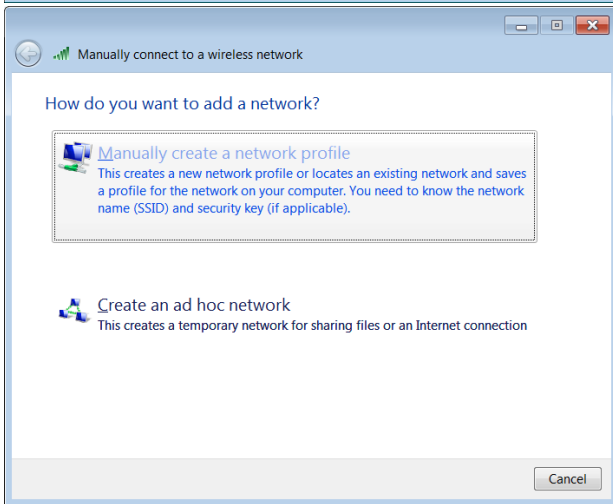
- Now try to join the MS-Members-2G or MS-Members-5G network

Windows 7/10 WPA2 Instructions (Ignore certificate checks):

- If the above preferred method fails manually add the WiFi network and ignore certificate validation
- Open Control Panel
 - Open Network and Internet
 - Manage Wireless Networks

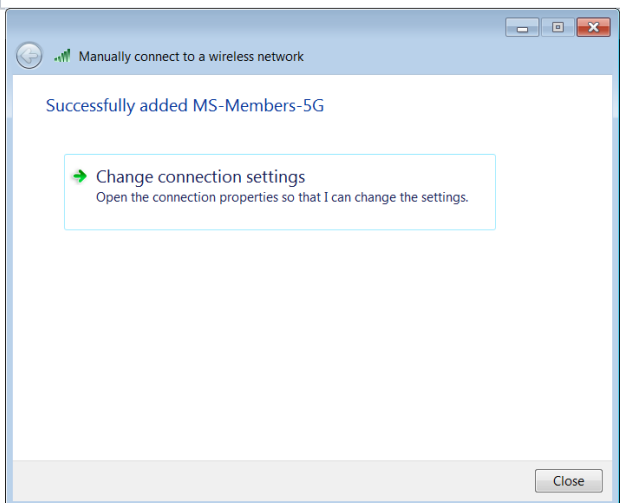
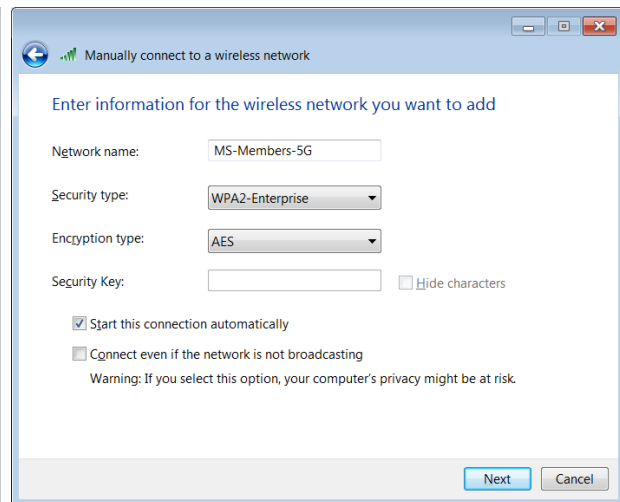


Click Add

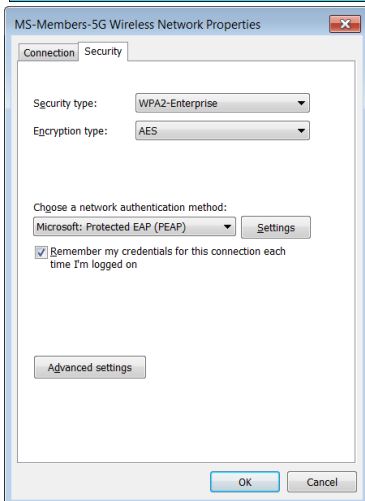


Click "Manually create a network profile"

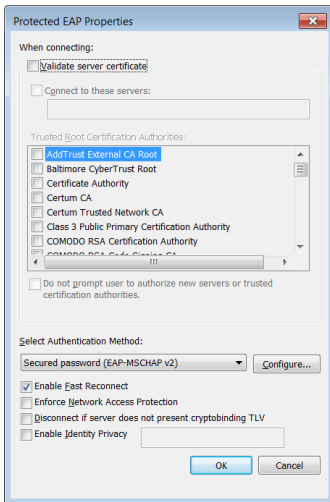
Network name: MS-Members-2G or MS-Members-5G
Security Type: WPA2-Enterprise
Encryption type: AES



Click on "Change connection settings"



Click on "Settings"



- Uncheck "Validate server certificate"
- No connect to MS-Members-2G or MS-Members-5G network