

4x8 CNC (Big Red)

For introductory and general guidance for CNC: [Learning CNC Resources](#)

General Specs

The 4x8 CNC is based off the CNCRouterParts.com 4x8 Standard model.

Capacity: 48x96

Travel: 49x97

Spindle 8000-24000 RPM

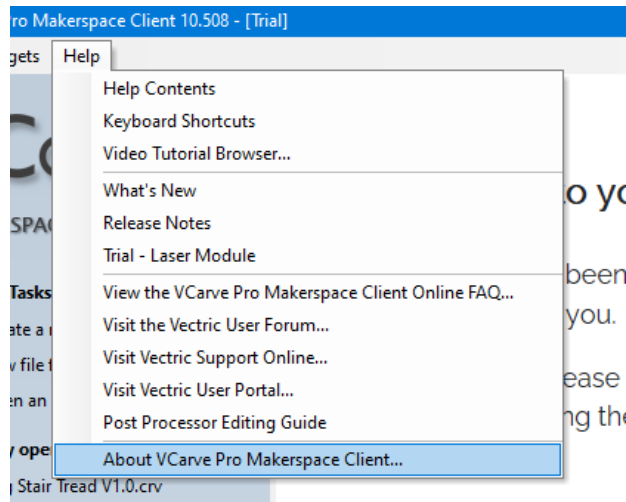
Control Software

The control software is Mach 4 See the [Mach 4](#) page for more information.

VCarve

To get started with VCarve on your own computer, download VCarve Pro from Vectric's website. Once installed, you can add the Makerspace ID below. With the Makerspace Client ID you can do everything except export the GCode from your project from your home computer. The VCarve files you save on your own computer can then be opened on the computer attached to Big Red which has the version of VCarve installed, and you can then export your GCode.

VCarve 15.5 client code: A779D-17688-765A8-1B5D8-A30F0-8C8B9-12ECB



When saving your GCode from VCarve for Big Red, use the "CNC Router Parts.txt" profile.

Full Big Red Checklist



Big Red CNC Checklist V1.0.pdf

Big Red Reminders



CNC Reminders V1.0.pdf

Big Red Training Presentation



Makersmiths - Big ...ss Slides V2.0.pdf